


FISHWAY STATUS REPORT

Date: 1/11/2014
Inspection Period: 1/ 5 thru 1/11/2014

All JD Fishways are inspected once per day during winter season;
 frequent monitoring of the PLC displays in SMF Fisheries Office as necessary.



JOHN DAY DAM

JD/WC Project-Fisheries
 P.O. Box 823
 Rufus, Oregon 97050
 Phone: 541-506-7860

John Day Dam	Inspections	Criteria	Total Number of Inspections:	7	Temperature:	40.4 F
	Out of Criteria	Limit			Secchi:	5.7 Ft.
NORTH FISHWAY			In regular service and meeting the optimal FPP criteria			
Exit differential	0	≤ 0.5'				
Exit Control weirs	0	High setting	High setting is normal for JDN			
Count station differential	0	≤ 0.3'				
Weir crest depth	0	1.0' ± 0.1'				
Entrance differential	0	1.0' - 2.0'	AVG	1.5		
SOUTH FISHWAY			OOS for the annual maintenance outage since 1/4/14 PM. Dewatered 1/7/2014 AM.			
Exit differential	N/A	≤ 0.5'				
Exit Control weirs	N/A	MID setting	MID is normal for JDS			
Count station differential	N/A	≤ 0.3'				
Weir crest depth	N/A	1.0' ± 0.1'				
South entrance differential	N/A	1.0' - 2.0'	AVG	#DIV/0!		
Entrance weir SE1	N/A	depth (≥ 8')	AVG	#DIV/0!		
Collection channel velocity	N/A	1.5 - 4 fps	AVG			
Bay 1 differential	N/A	1.0' - 2.0'	AVG	#DIV/0!		
N. Entrance PH(Bay 19)differential	N/A	1.0' - 2.0'	AVG	#DIV/0!		
Entrance weir NE1	N/A	depth (≥ 8')	AVG	#DIV/0!		
Entrance weir NE2	N/A	depth (≥ 8')	AVG	#DIV/0!		
JUVENILE PASSAGE			OOS for winter maintenance since 12/20. RTS in late March 2014.			
Forebay/bypass conduit differential	N/A	4.0' - 5.0'	AVG	4.6		
Submersible traveling screens	N/A	visual inspect				
Turbine trashrack drawdown	N/A	<1.5', wkly				
Vert barrier screen drawdown	N/A	<1.5', wkly				
Spill volume	N/A	n/a				
Spill pattern	N/A	n/a				
Turbine Unit Priority	N/A	per FPP				
Turbine 1% Efficiency	N/A	per FPP				

SMOLT MONITORING FACILITY

Operation: SMF was successfully dewatered on 12/17 after JD Mechanics fixed the crest gate's lifting mechanism. Complete winterization of flushing water pipes and valves underway. RTS is mid March 2014.

Debris: N/A

Maintenance:

SMF building / wet lab OOS and winterized by JD Fisheries.

SMF CCTV replacement underway; new display monitors and control console already installed. Replacement camera will be installed soon.

Research: None

Fallbacks: AVG: 0 MAX: 0 MIN: 0

OTHER ISSUES:

JOHN DAY

Birds: See Avian tabs.

120 avian lines are properly installed. Five lines are missing; one attaching to Navlock broke on 1/10/14. JD Management preparing a plan for the missing lines' replacement before 2014 passage season.

Operations:

JD North Fishway returned to regular service on 12/19 and it has been meeting the optimal FPP criteria since.

JD South Fishway OOS in preparation for winter dewatering since 1/4/14 night. AWS turbines penstock's bulkhead installed on 1/6. Upper fishway was dewatered as planned on 1/7/14 AM. Only three juvenile steelhead and one adult carp had to be salvaged and were released into the tailrace in excellent condition. Collection channel was dewatered on 1/9. Two juvenile steelhead, four carp, one smallmouth bass and one crappie were salvaged and released into the tailrace in excellent condition. Unfortunately, three adult steelhead, two adult steelhead, one j walleye and one j cat were found dead on SE Entrance diffuser grating. The mortalities were due to failed drain valve, which did not close properly. JD Maintenance was notified and will repair before its return to service in March 2014.

All STSs were removed from MU gatewells for winter maintenance by 19 December. JBS started 1/3 open orifices rotation schedule on 12/20.

JBS collection channel is scheduled for dewatering/ inspection in early February 2014.

Maintenance:

Calibration: 12/8/2013 All JD Fishways' PLCs/ water level sensors were within 0.3' margin of error.

Research:

Fish counting at both JD Fishways ended 10/31/13. Video counting began 11/1 and will continue through the winter.

Adult Salmonids Radio telemetry evaluations are ongoing at both JD adult fishway. University of Idaho crew is in charge of detecting of all adult adult salmonids, which were first tagged at Bonneville Dam.

Glen A. Smith PE
OPM John Day/Willow Creek Project

Date: ___ 13-Jan-14

2007-2013 Water Temps JDA w/ 12yr avg



JDA COLLECTION CHANNEL VELOCITY

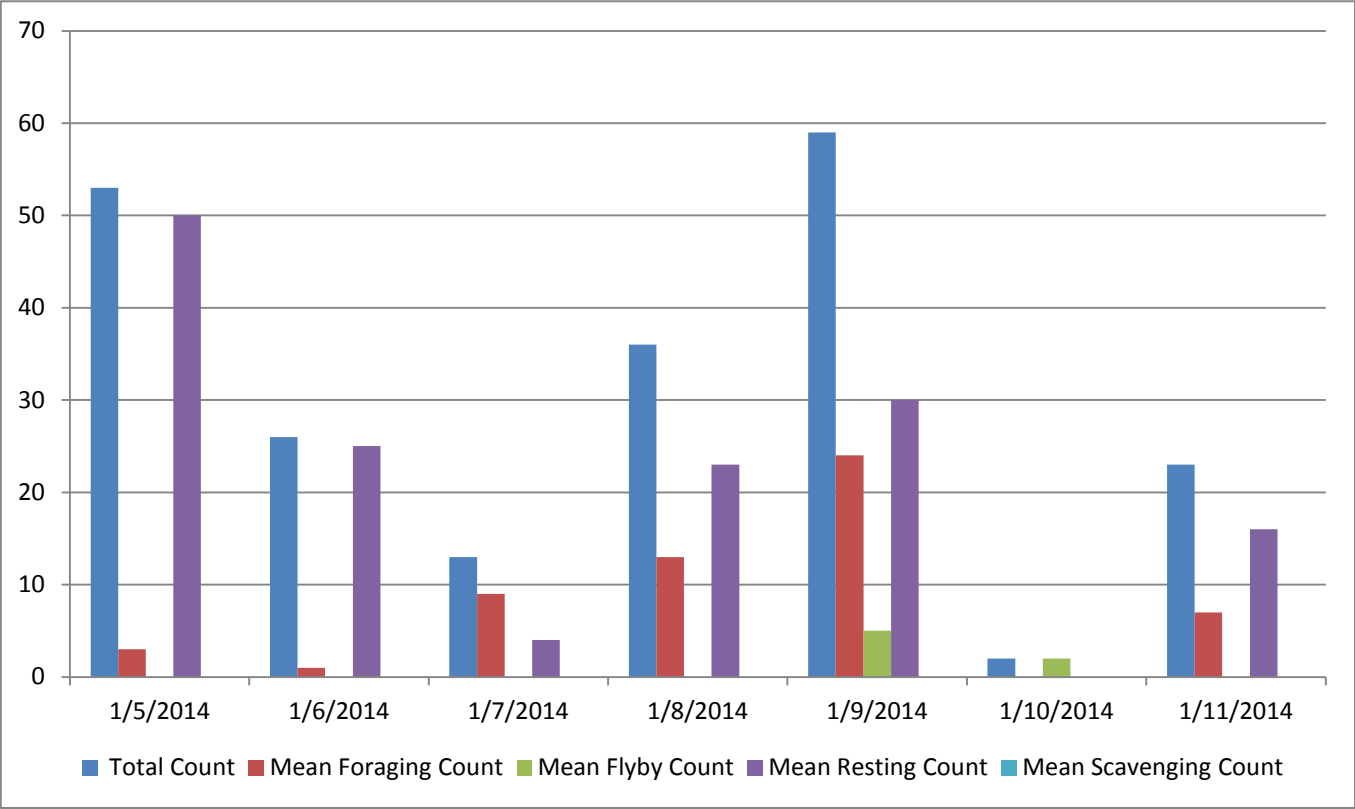
Date 21-Dec-13

By: pk

Bay(s)	Time	Sec.	Velocity (f/s)
0-2	0:01:23	83	2.17
2 - 4	0:02:20	140	3.16
4 - 6	0:03:16	196	3.21
6 - 8	0:04:14	254	3.10
8 - 10	0:05:10	310	3.21
10 - 12	0:06:10	370	3.00
12 - 14	0:07:17	437	2.69
14 - 16	0:08:13	493	3.21
16 - 18	0:08:55	535	4.29

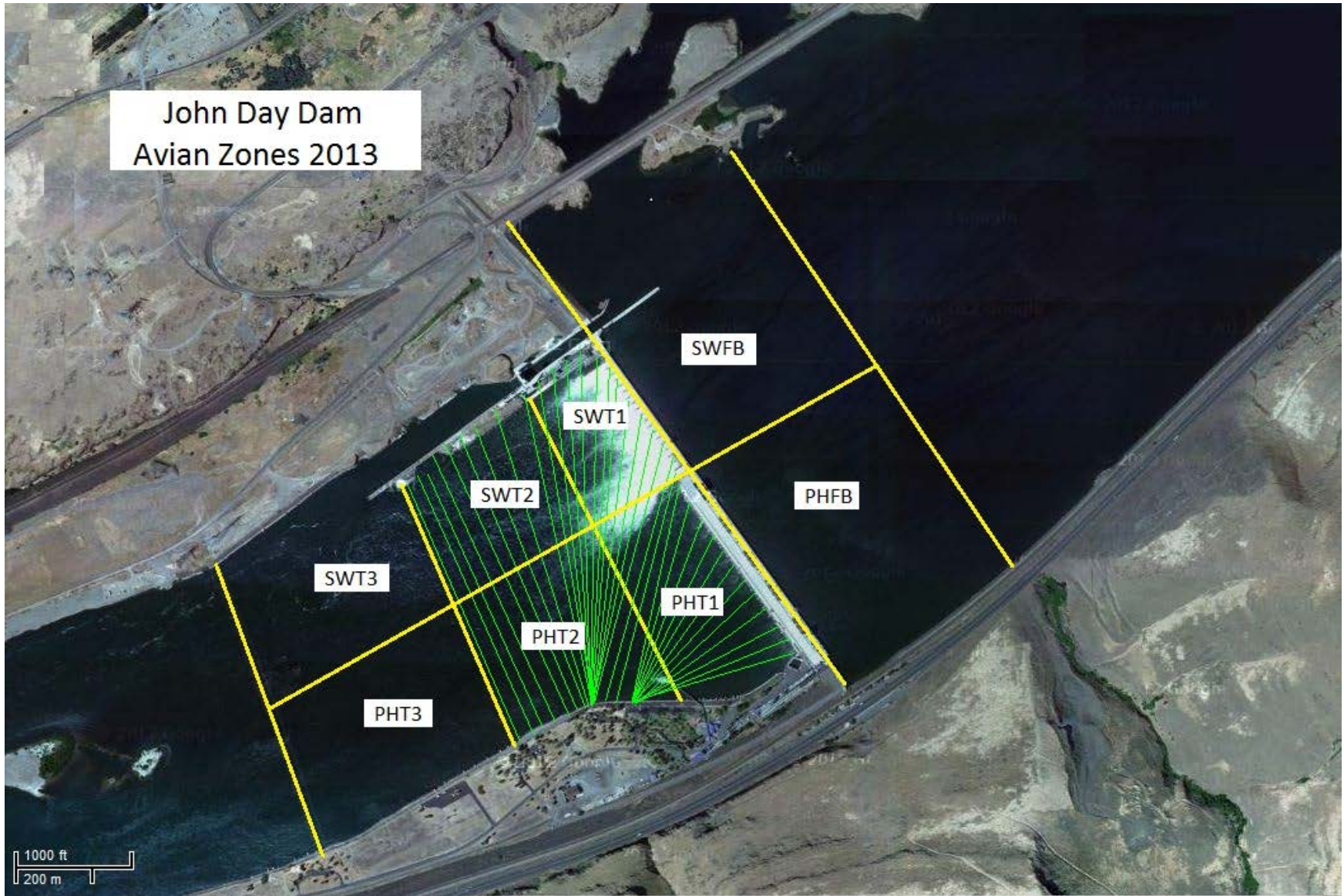
3.12

Bird Count by Activity



Date	Total Count	Mean Foraging Count	Mean Flyby Count	Mean Resting Count	Mean Scavenging Count
1/5/2014	53	3	0	50	0
1/6/2014	26	1	0	25	0
1/7/2014	13	9	0	4	0
1/8/2014	36	13	0	23	0
1/9/2014	59	24	5	30	0
1/10/2014	2	0	2	0	0
1/11/2014	23	7	0	16	0

John Day Dam
Avian Zones 2013



John Day:

	Temp:	Secchi:	Fallbacks
Sun	41	6.0	
Mon	41	6.0	
Tues	41	6.0	
Wed	40	5.5	
Thur	40	5.5	
Fri	40	5.5	
Sat	40	5.5	
AVG:	40.4	AVG: 5.7	AVG
			MAX
			MIN

	NE1	NE2	S.Ent	SE1	N.Ent	JBS Diff	Bay1	Bay19
Sun					1.5	4.6		
Sun								
Mon					1.4	4.5		
Mon								
Tues					1.4	4.6		
Tues								
Wed					1.4	4.6		
Wed								
Thur					1.4	4.6		
Thur								
Fri					1.6	4.5		
Fri								
Sat					1.5	4.5		
Sat								
AVG:	#DIV/0!	#DIV/0!	#DIV/0!	#DIV/0!	1.5	4.6	#DIV/0!	#DIV/0!